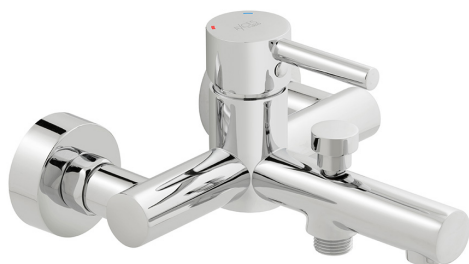


SPECIFICATION SHEET

COLLECTION: NURI

PRODUCT CODE: AX-NUR-123-CP



TAP TYPE

Bath Shower Mixer

PLUMBING SYSTEM SUITABILITY

Pumped System, Combination Boiler, Pressurised System

HANDLES

Single Lever

MOUNTING

Wall Mounted

WITH INTEGRATED DIVERTER

No

WITH EASY-FIT BRACKETS

No

WITH SHOWER KIT

No

WITH THERMOSTATIC TECHNOLOGY

No

FOR USE WITH BATH FILLER WASTE AND OVERFLOW

No

tel: 01934 744466
email: sales@vado.com
www.vado.com

WHERE INSPIRATION FLOWS
TAPS | SHOWERS | FURNITURE



SPECIFICATION SHEET

COLLECTION: NURI

PRODUCT CODE: AX-NUR-123-CP

MINIMUM OPERATING PRESSURE

1.0 Bar MP

MAXIMUM OPERATING PRESSURE

5.0 Bar HP

WITH BATH SPOUT

No

WITH AIR-INJECTION TECHNOLOGY

No

WITH WATER FLOW STRAIGHTENER

Yes

WITH WATER FLOW AERATOR

No

CONNECTIONS / FITTINGS

1/2" x 3/4" x 50mm eccentric threaded connections

SPARE PARTS

Ceramic Cartridge W-001-N35

FINISH

Chrome

COLLECTION NAME

Nuri

GUARANTEE

10 Year Guarantee



TECHNICAL DRAWING

COLLECTION: NURI
PRODUCT CODE: AX-NUR-123-CP

