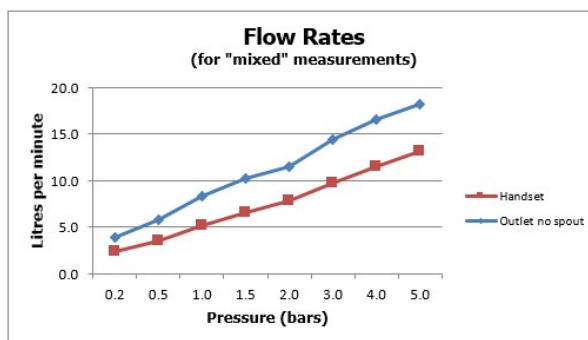
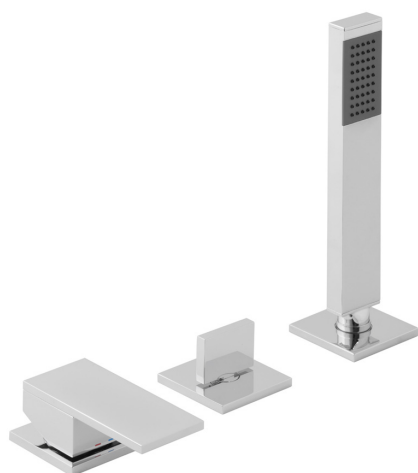


# SPECIFICATION SHEET

COLLECTION: NOTION

PRODUCT CODE: NOT-232NS-CP



The flow rate displayed is calculated using ideal system conditions. This result should only be taken as an indication as the flow rate may vary depending on the specific in-situ configuration.

## TAP TYPE

Bath Shower Mixer

## PLUMBING SYSTEM SUITABILITY

Pumped System, Pressurised System

## HOLES

3 Hole

## MOUNTING

Deck Mounted

## WITH INTEGRATED DIVERTER

No

## WITH EASY-FIT BRACKETS

No

## WITH SHOWER KIT

Yes

## WITH THERMOSTATIC TECHNOLOGY

No

## FOR USE WITH BATH FILLER WASTE AND OVERFLOW

Yes

tel: 01934 744466  
email: [sales@vado.com](mailto:sales@vado.com)  
[www.vado.com](http://www.vado.com)

WHERE INSPIRATION FLOWS  
TAPS | SHOWERS | FURNITURE



# SPECIFICATION SHEET

COLLECTION: NOTION

PRODUCT CODE: NOT-232NS-CP

## MINIMUM OPERATING PRESSURE

3.0 Bar HP

## MAXIMUM OPERATING PRESSURE

5.0 Bar HP

## RECOMMENDED FLOW REGULATOR

FR-FLEXI/8-PLA

## WITH BATH SPOUT

No

## WITH AIR-INJECTION TECHNOLOGY

No

## WITH WATER FLOW STRAIGHTENER

No

## WITH WATER FLOW AERATOR

No

## CONNECTIONS / FITTINGS

1 x 3/4"x 3/4" 600mm flexipipe connectors 2 x 400 1/2" female flexipipe connectors to valve

## DECK HOLE DRILL DIAMETER

Valve: 46mm Diverter: 44mm Handset: 32mm

## SPARE PARTS

diverter cartridge F-803-33/2X ceramic cartridge CAR-KN40

## FINISH

Chrome

## COLLECTION NAME

Notion

# SPECIFICATION SHEET

COLLECTION: NOTION  
PRODUCT CODE: NOT-232NS-CP

## GUARANTEE

15 Year Guarantee

tel: 01934 744466  
email: [sales@vado.com](mailto:sales@vado.com)  
[www.vado.com](http://www.vado.com)

WHERE INSPIRATION FLOWS  
TAPS | SHOWERS | FURNITURE

