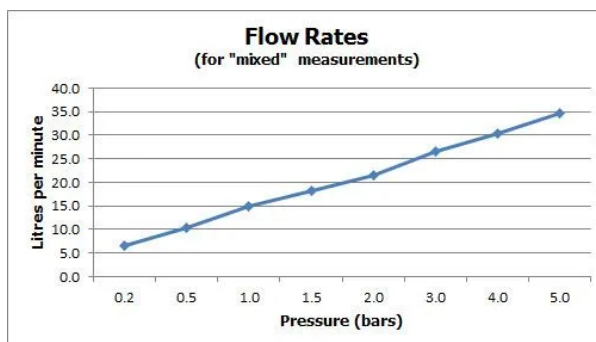
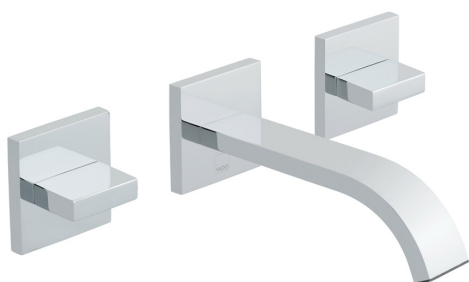


# SPECIFICATION SHEET

COLLECTION: GEO

PRODUCT CODE: GEO-109-C/P



## TAP TYPE

Basin Mixer

## COLLECTION NAME

Geo

## FINISH

Chrome

## RECOMMENDED FLOW REGULATOR

FR-106/5-PLA

## MINIMUM OPERATING PRESSURE

0.2 Bar LP

## MAXIMUM OPERATING PRESSURE

5.0 Bar LP

## GUARANTEE

15 Year Guarantee

## WITH ECOTURN COLD START TECHNOLOGY

No

## NOTES

two part cartridges ensure perfect alignment of handle and shroud

tel: 01934 744466  
email: [sales@vado.com](mailto:sales@vado.com)  
[www.vado.com](http://www.vado.com)

WHERE INSPIRATION FLOWS  
TAPS | SHOWERS | ACCESSORIES



# SPECIFICATION SHEET

COLLECTION: GEO

PRODUCT CODE: GEO-109-C/P

## WITH WATER FLOW STRAIGHTENER

Yes

## WITH WATER FLOW AERATOR

No

## INSTALLATION TOLERANCES

min-max wall mount 59-68mm

## CONNECTIONS / FITTINGS

2 x 1/2" male x 1/2" male x 90mm straight connections and 1 x 1/2" x 1/2" x 1/2" x 47mm female connection (T-piece)

## SPARE PARTS

cold ceramic cartridge C-503-LTC hot ceramic cartridge C-503-RTC

## HOLES

3 Hole

## MOUNTING

Wall Mounted

## PLUMBING SYSTEM SUITABILITY

Gravity System, Pumped System, Combination Boiler, Pressurised System

# TECHNICAL DRAWING

COLLECTION: GEO

PRODUCT CODE: GEO-109-C/P

