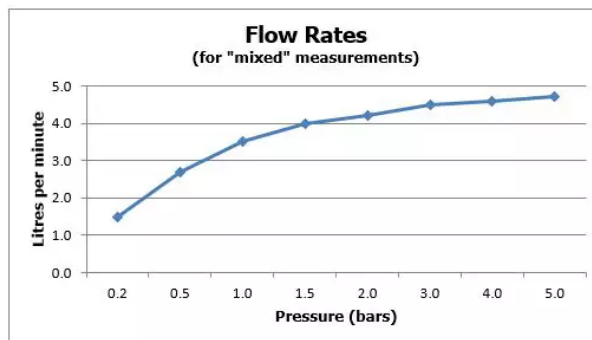
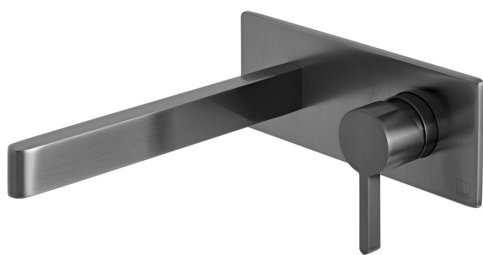


# SPECIFICATION SHEET

COLLECTION: EDIT

PRODUCT CODE: IND-EDI109S/A-BLK



The flow rate displayed is calculated using ideal system conditions. This result should only be taken as an indication as the flow rate may vary depending on the specific in-situ configuration.

## TAP TYPE

Basin Mixer

## FINISH

Brushed Black

## COLLECTION NAME

Edit

## GUARANTEE

15 Year Guarantee

## PLUMBING SYSTEM SUITABILITY

Pumped System, Combination Boiler, Pressurised System

## MINIMUM OPERATING PRESSURE

1.0 Bar MP

## MAXIMUM OPERATING PRESSURE

5.0 Bar HP

## HANDLES

Single Lever

## MOUNTING

Wall Mounted

tel: 01934 744466  
email: sales@vado.com  
www.vado.com

WHERE INSPIRATION FLOWS  
TAPS | SHOWERS | FURNITURE



# SPECIFICATION SHEET

COLLECTION: EDIT

PRODUCT CODE: IND-EDI109S/A-BLK

## INSTALLATION TOLERANCES

min-max wall mount 52-72mm

## RECOMMENDED FLOW REGULATOR

5 l/m flow regulator fitted as standard

## WITH ECOTURN COLD START TECHNOLOGY

No

## WITH WATER FLOW STRAIGHTENER

No

## WITH WATER FLOW AERATOR

No

## CONNECTIONS / FITTINGS

2 x 1/2" inlets

## SPARE PARTS

ceramic cartridge CAR-K35B



# TECHNICAL DRAWING

COLLECTION: EDIT

PRODUCT CODE: IND-EDI109S/A-BLK

