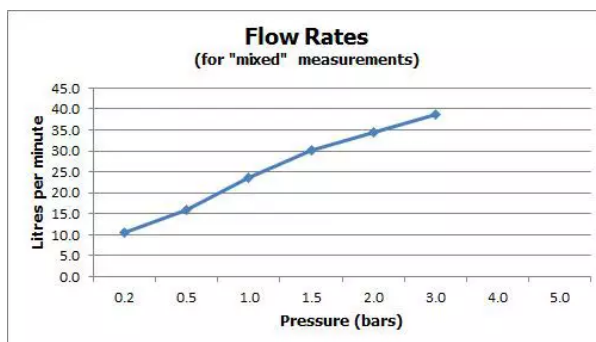
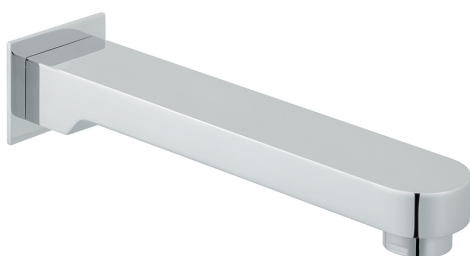


# SPECIFICATION SHEET

COLLECTION: LIFE

PRODUCT CODE: LIF-140-C/P



The flow rate displayed is calculated using ideal system conditions. This result should only be taken as an indication as the flow rate may vary depending on the specific in-situ configuration.

## TAP TYPE

Bath Spout

## PLUMBING SYSTEM SUITABILITY

Gravity System, Pumped System, Combination Boiler, Pressurised System

## MOUNTING

Wall Mounted

## WALL HOLE DRILL DIAMETER

22mm

## CONNECTIONS / FITTINGS

1/2" x 45mm male threaded connection

## MINIMUM OPERATING PRESSURE

0.2 Bar LP

## MAXIMUM OPERATING PRESSURE

5.0 Bar HP

## WITH WATER FLOW STRAIGHTENER

No

## STYLE

Oval

tel: 01934 744466  
email: [sales@vado.com](mailto:sales@vado.com)  
[www.vado.com](http://www.vado.com)

WHERE INSPIRATION FLOWS  
TAPS | SHOWERS | FURNITURE



# SPECIFICATION SHEET

COLLECTION: LIFE

PRODUCT CODE: LIF-140-C/P

## NOTES

Easy cut thread at 20mm and 40mm

## FINISH

Chrome

## COLLECTION NAME

Life

## GUARANTEE

15 Year Guarantee



# TECHNICAL DRAWING

COLLECTION: LIFE

PRODUCT CODE: LIF-140-C/P

