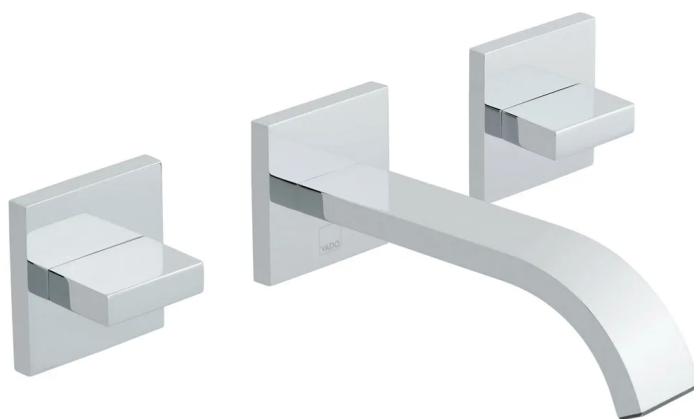


SPECIFICATION SHEET

COLLECTION: GEO

PRODUCT CODE: GEO-109-C/P



DESCRIPTION:

3 hole basin mixer
wall mounted
with water flow straightener
cold ceramic cartridge C-503-LTC
hot ceramic cartridge C-503-RTC
two part cartridges ensure perfect alignment of handle and shroud
2 x 1/2" male x 1/2" male x 90mm straight connections
and 1 x 1/2" x 1/2" x 1/2" x 47mm female connection (T-piece)
min-max wall mount 59-68mm
minimum operating pressure 0.2 bar LP

FINISH:

Chrome

FLOW REGULATOR:

FR-106/4-PLA

MINIMUM OPERATING PRESSURE:

0.2 bar LP

FLOW RATE AT 3.0 BAR FLOW PRESSURE:

27 l/min



tel: 01934 744466
email: sales@vado.com
www.vado.com

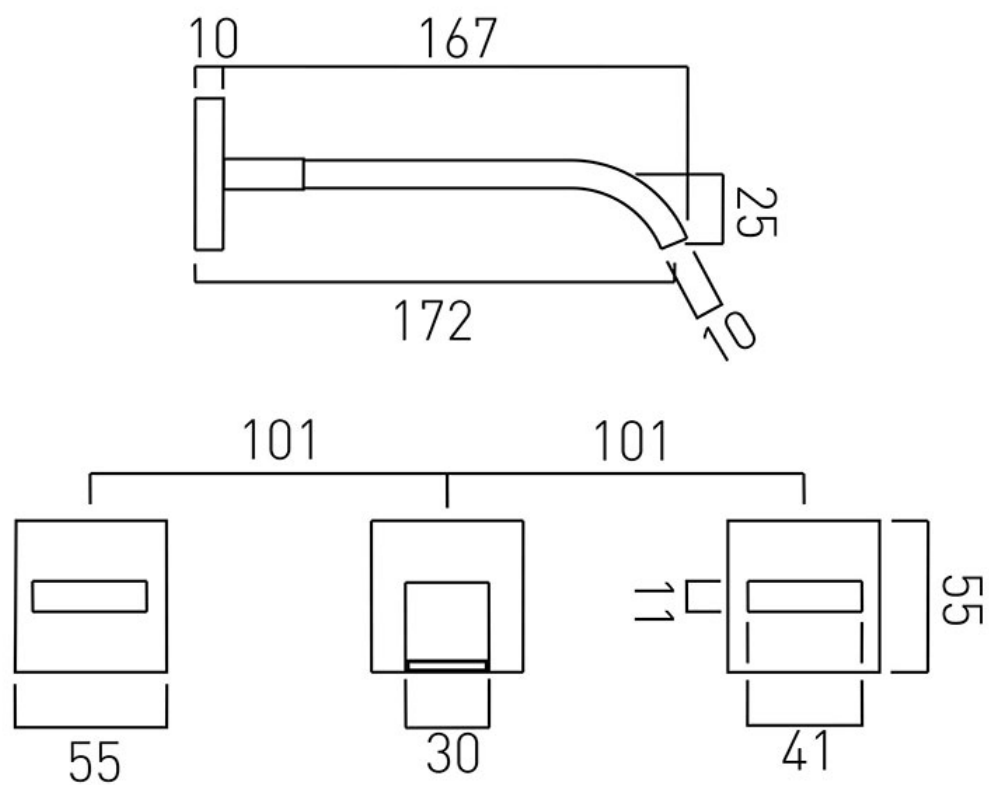
where inspiration flows
taps | showering | accessories



TECHNICAL DRAWING

COLLECTION: GEO

PRODUCT CODE: GEO-109-C/P



tel: 01934 744466
email: sales@vado.com
www.vado.com

where inspiration flows
taps | showering | accessories

