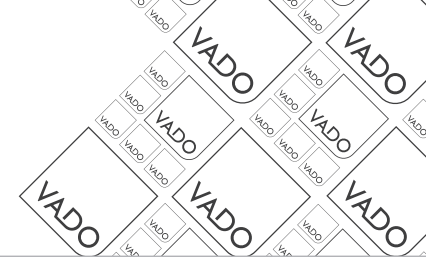




where inspiration flows

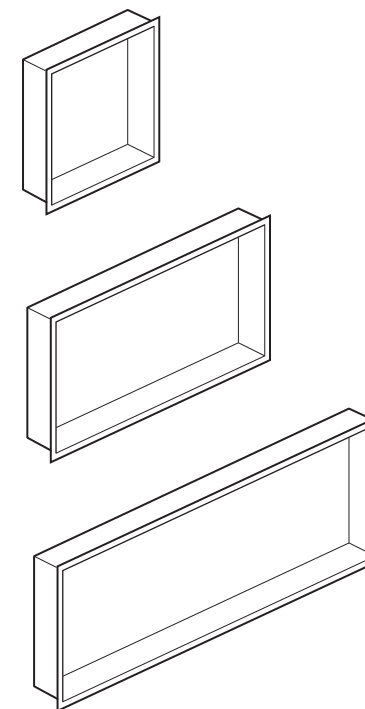
MUSE

Installation Guide
Niche



This instruction booklet covers these models:
MUS-18502-300, MUS-18502-600, MUS-18502-900
(All finished options)

MUS-18502-300
MUS-18502-600
MUS-18502-900



Vado
Wedmore Road, Cheddar, Somerset, England BS27 3EB
tel 01934 744466. fax 01934 744345
aftersales@vado.com
www.vado.com



Important - Please Read

VADO reserves the right to make technical improvements and enhance the appearance of the products included in this instruction manual.

Please read these instructions carefully before starting the installation and keep for future reference.

Remove all packaging and check the product for before starting installation.

Any alterations made to this product may invalidate the guarantee.

Please take great care when installing this product not to damage its surface.

The plumbing codes applicable in the respective countries must be observed.

Check for any hidden pipes or electrical cables before drilling holes in the wall.

The installation must comply with all Local/National Water Supply Authority Regulations/Byelaws and Building and Plumbing Regulations. To be installed in accordance with BS EN 806.

Cleaning Instructions

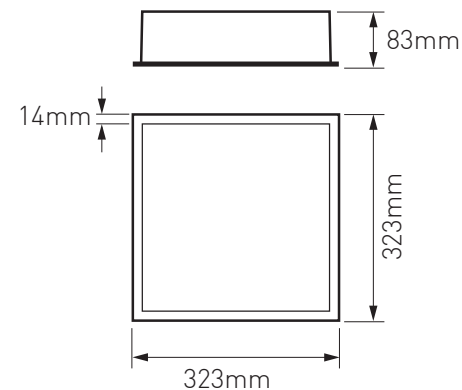
This product is finished to the highest standard. Due care needs to be taken to ensure the appearance is retained. We recommend cleaning all products with a soft damp cloth **ONLY** and advise strongly against the use of all aggressive/corrosive cleaning products i.e. powders and liquids. If these instructions are not followed, this may invalidate your guarantee in the event of a problem occurring.

When using tile or grout cleaners, if there's any contact with the product ensure the area is rinsed thoroughly with water only.

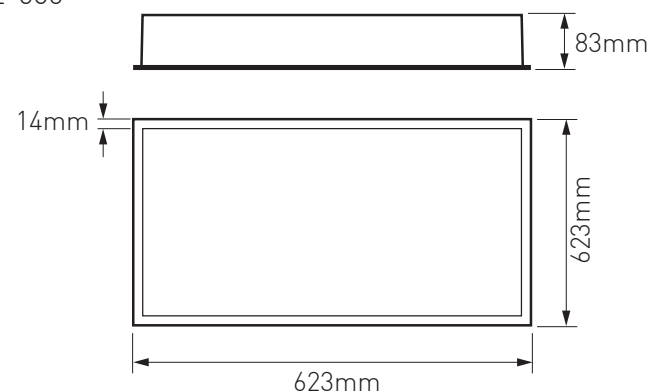
We advice against placing aluminum items directly in the niche.

Dimensions

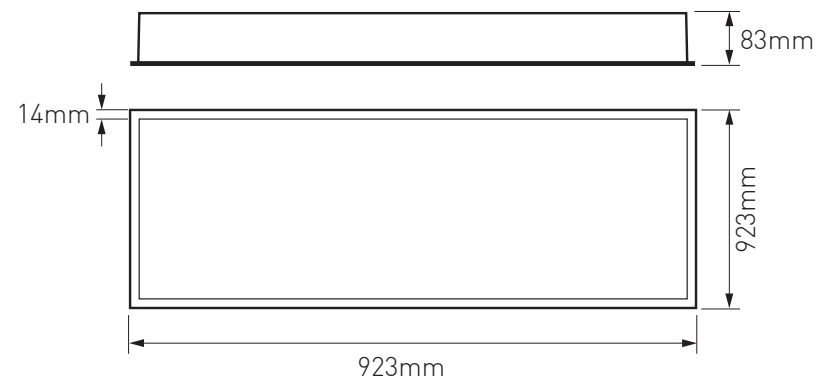
MUS-18502-300



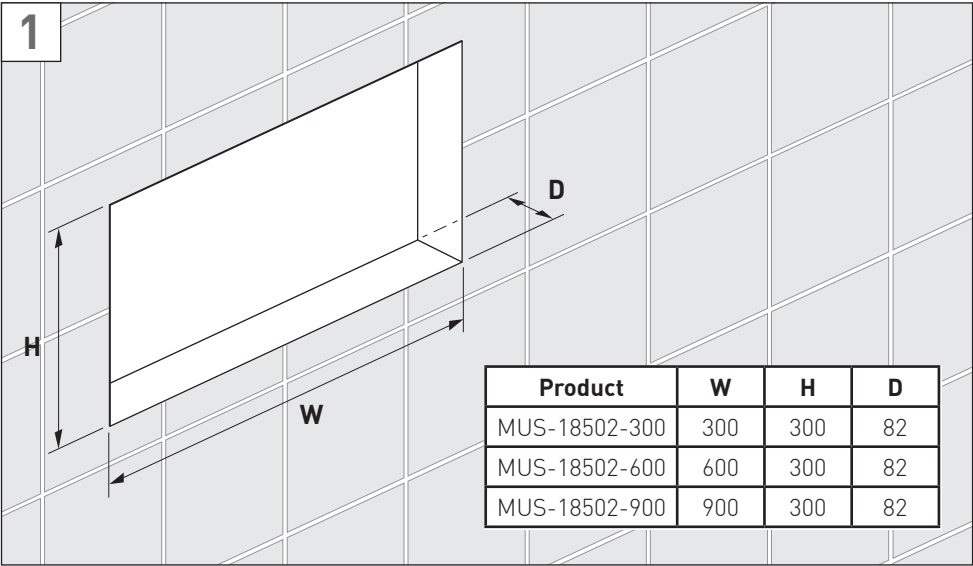
MUS-18502-600



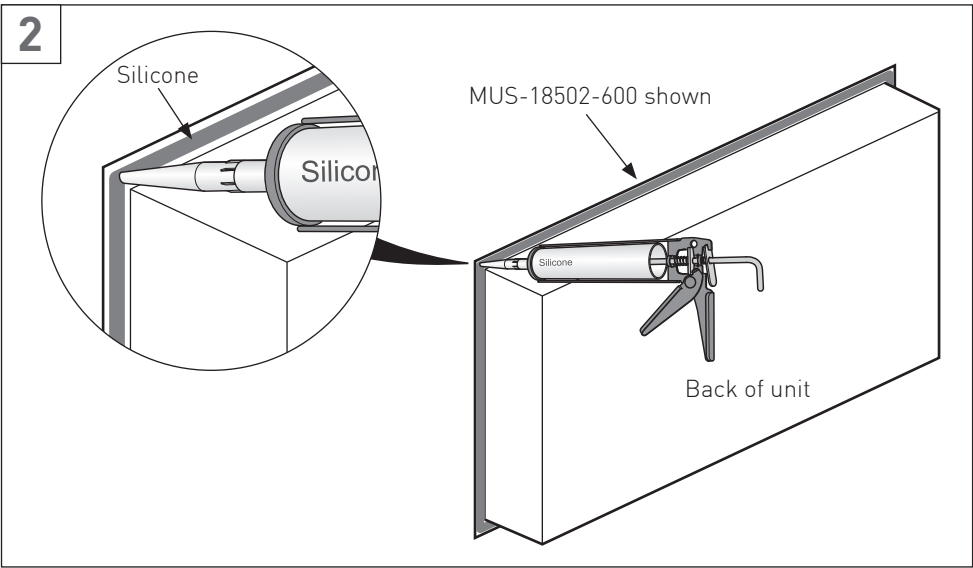
MUS-18502-900



Installation

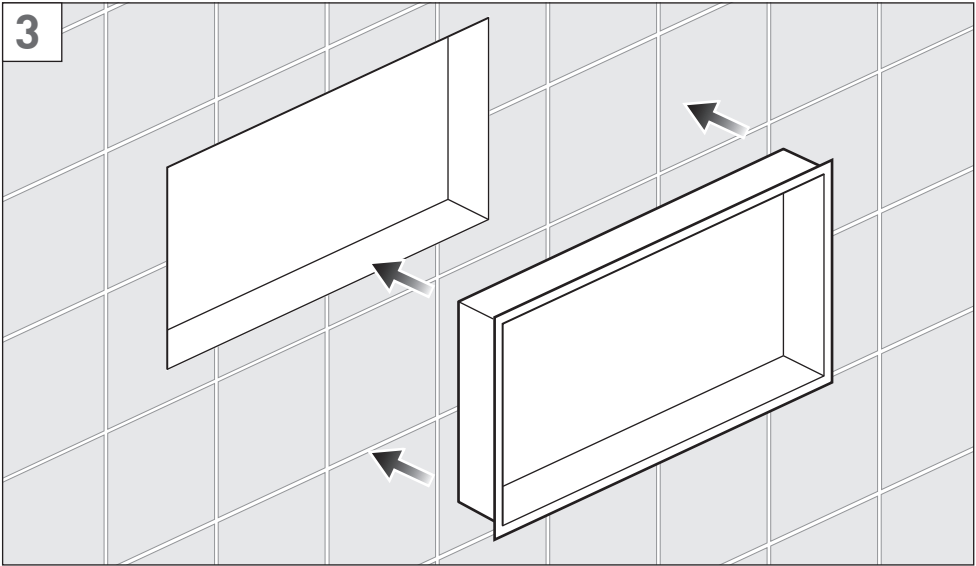


Prepare the hole in the wall using the above sizes to suit your product.
Please note, the MUS-18502-600 is shown throughout the installation steps. Please follow the same procedure to install the other products.

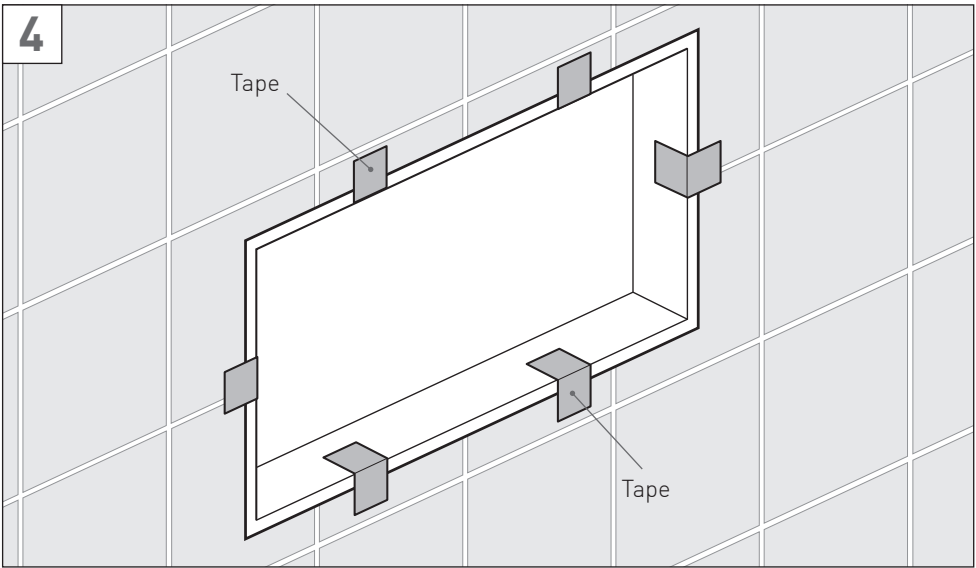


Silicone around the edges on the rear of the niche.
Do not use silicone containing acetic acid.

Installation

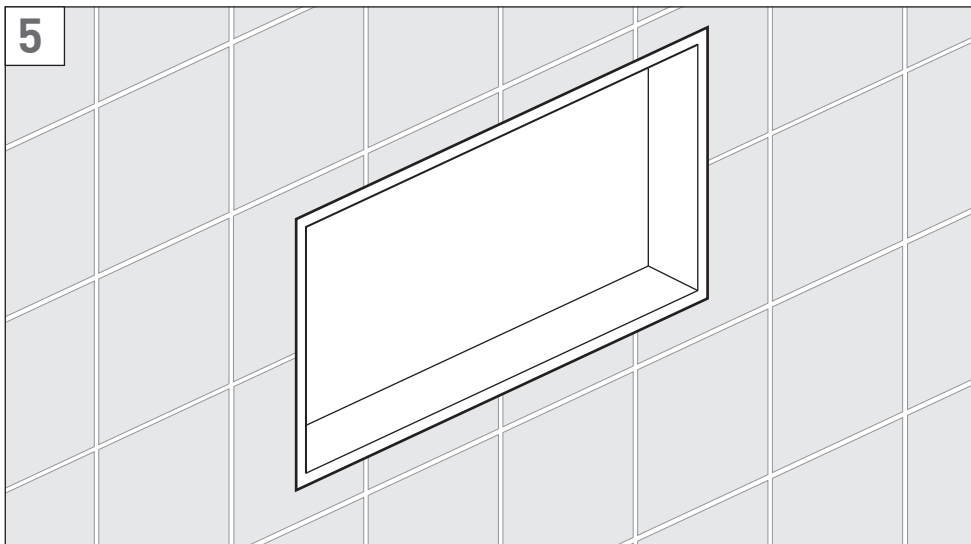


Install the niche into the wall recess.



Using a heavy grade adhesive tape as required to secure the Niche to the wall.
Use more tape on the larger unit.
Leave for 24 hours to set, then remove the tape.

Installation



Installation is now complete

Guarantee

This VADO shower niche comes with a 2 year guarantee as standard. Within this guarantee period, VADO will provide replacement parts needed to complete the product repair. This standard guarantee may be extended by registering your product on our website at: <https://www.vado.com/support/guarantee>.

Once registered this niche will have a 5 year guarantee.

Guarantee Conditions

Our products are guaranteed against manufacturing defects from the date of purchase until the expiry of the relevant guarantee period shown above.

The guarantee is only valid if:

- The product has been installed, used and maintained in accordance with VADO's instructions and subjected to normal use only.
- The defect is not due to accident, misuse, neglect, or incorrect/inappropriate repair (other than by VADO or VADO authorised agents) or damage caused by foreign objects or substances.
- The extended guarantee is only available if you have completed the guarantee registration process.

This can be done via the VADO website or via telephone to our Aftersales team.

Registration must be completed within 6 months from the date of purchase. Under the extended guarantee period VADO will, at its option, offer to supply any replacement product (or component part) assessed to be defective **[SEE NOTE 11]**.

- The guarantee (whether standard or extended) is non-transferable to any subsequent owner.

All claims under the guarantee should be notified in the first instance to our Aftersales department, contact details below, this must be done no later than the last day of the relevant guarantee period.

All claims must be accompanied by proof of purchase (sales receipt or delivery note) from an official VADO dealer.

The guarantee does not extend to any consequential loss or damage.

After repair or replacement, the relevant guarantee period will be calculated from the original date of purchase.

VADO operates a policy of continuous product development and therefore reserves the right to change the product, packaging and documentation specifications without notice.

In situations where like-for-like replacements are not possible, VADO will endeavour to provide the closest alternative. E&OE.

NOTES:

[1] VADO reserves the right to charge in advance for a product (or replacement part) pending collection and investigation (at VADO expense) to confirm a defect is due to a manufacturing issue.

If a defect is found the charge will be refunded or cancelled.

This guarantee is in addition to and does not affect your statutory rights as a consumer.

Tel: 01934 745163

Email: aftersales@vado.com